

The Lion Ledger

10/29/21 BE KIND, BE CONFIDENT, BE RESPECTFUL, WORK HARD



ORDER
YOUR
Yearbook!

CLICK HERE

to

ORDER ONLINE



\$25 from now until 12/31/21*

****Price will increase to \$30 until 4/15***

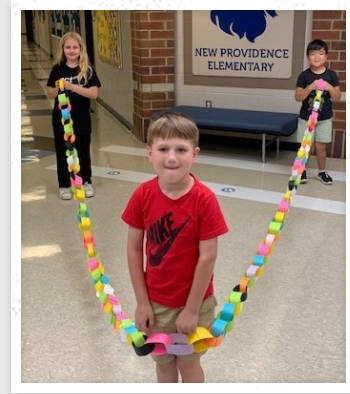
*Yearbook orders have only been
available since the week of October 18th*

IT WAS A GREAT WEEK IN THE DEN!

From Red Ribbon Week to Linking Lexington...our Lions showed their PRIDE last week. Red Ribbon Week emphasized the importance of growing up Drug Free for our students. Each day of the week promoted awareness and students were able to sign a pledge to be Drug Free. Our week wrapped up with a visit from "RB", the River Bluff High School mascot, with a warm welcome at carpool drop-off!

Thank you to our Lion families for supporting Lexington High School's, Students In Action, with their Linking Lexington campaign. NPE donated over \$280 to Cancer of Many Colors, a

Lexington based charity that aids families in Lexington dealing with cancer.



WEEKLY LIFESKILL CHALLENGE



LIFESKILL CHALLENGE OF THE WEEK: TEAMWORK

Each week, New Providence highlights a different "LifeSkill Challenge" for our students. As students demonstrate the weekly LifeSkill, they are presented with a "ticket". That "ticket" is put into a box and names are drawn at the end of each week

The week's challenge was to demonstrate **Teamwork**. Congratulations to all the students for showcasing our LifeSkill of **Teamwork**. The following students' **Teamwork** tickets were drawn from the box:

Eliza M. - Mrs. Frye's class

Lila R. - Mrs. Smith's class

Cameron L. - Mrs. Mabry's class

Braxton A. - Mrs. Scoma's class

Taylor W. - Mrs. Scoma's

Ayva C. - Mrs. Sundberg's class

REPORT CARD REMINDERS

Reports Cards were issued on Friday, October 29th. Please return report card covers to your child's homeroom teacher.

LOOLA students and any students that are quarantined, those report cards were mailed on Friday, October 29th.



A NOTE FROM PTA...

Dear NPE Parents,

We are so thankful for all of our great teachers and staff at NPE! You may have noticed that, again this year, we have not been able to treat our staff with your delicious foods at duty-free lunch. Those of you who are new to NPE since COVID may be unaware that we used to serve our teachers by giving them a duty-free lunch each month. Some parent volunteers would sit with the students and others would send in food for the teacher/staff meal.

In lieu of this special treat, the PTA has been providing monthly snacks and/or meals to show our appreciation to our wonderful teachers and staff. We would love for you to be involved! We still cannot have you volunteer inside the school or send in any food due to restrictions, so we are asking you to consider giving a monetary gift instead. The PTA will use your money to provide a wonderful boxed meal for all teachers and staff in December. Any excess money will be used to continue to bless our teachers and staff with treats next semester.

How to give:

1. Send a check made out to New Providence PTA with the memo marked hospitality.
2. Send money quickly and easily with Venmo.

Instructions for Venmo:

- If you do not already have it, please download the Venmo application.
- Click "Pay or Request" button
- Search for: New Providence Elementary PTA (@New Providence - PTA)
- Enter Amount
- Include in Comment Box - "NPE PTA Hospitality Donation"
- Click blue "Pay" button
- Review and click the green box "Pay New Providence Elementary PTA" to submit
(Note: if you have never used Venmo before, you may need to attach a bank account or credit card)

Thank you for your generosity! We want our NPE teachers and staff to continue to feel our love and support.

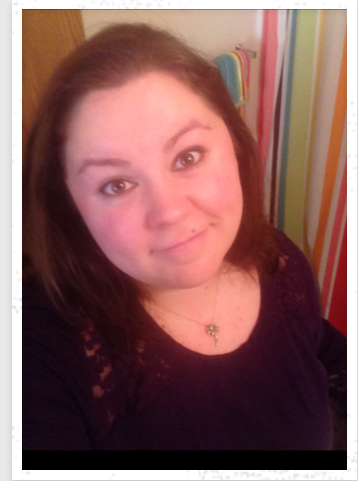
PTA Hospitality Chair,
Terri Johnson

LET'S GIVE A "LION'S ROAR"

JEN WILLIAMS - HOUSEKEEPER

Jen Williams joins our NPE Housekeeping team this year. Having worked at Publix in the deli for 3-1/2 years, and as an assistant deli manager in Ohio for 15 years, Ms. Williams felt it was time for a change. She has enjoyed being a part of the NPE family and appreciates the positive and cheerful attitude of the staff.

When not at NPE, she is spending time with her fiancé, Mike and her tuxedo cat, Lucy. She loves to cook, read and watch Netflix. She also loves traveling home to Ohio to visit her mom and family. She has only lived in Lexington for five years and is still exploring the area, but says working at NPE is one of the best decisions she's made since moving here. Welcome to the Lion family, Ms. Williams!



November 19th at New Providence Elementary

More information, including how to register,
will be available soon.

DHEC is coming to your child's school to give flu shots.

Is your child signed up?



The flu vaccine is the best protection for your child against the flu.

Getting your child a flu shot at school will save you a visit to the doctor's office.

Protecting your child with the flu shot means fewer days of missed school and work for you and your family.

The flu shot is given at no cost to you. Ask your child's school for more details.

www.scdhec.gov/flu



protect yourself.
protect your family.
prevent the flu.

CR-012143 7/19

DATES TO REMEMBER

November

5th	Spirit Day
10th	Collaborative Planning/ Early Release day
11th	Veterans Day
16th	PTA Board Meeting
19th	Spirit Day
24-26th	Thanksgiving Break
29th	Fall make-up pictures

NPE AND PUBLIX PARTNERS



Families who shop at Publix can support NPE. All you have to do is [sign up](#) for Publix Partners through your Club Publix account (if you don't already have one) and select New Providence Elementary. After that, you simply enter your phone number at checkout each time you make an eligible purchase. Thank you for supporting our LION students and staff!

Come to work for

EMPOWER **1**

LEXINGTON COUNTY
SCHOOL DISTRICT ONE

Substitute
Teachers
Wanted!

Apply Today!

Visit www.JoinLexington1.com and Click APPLY NOW

LEXINGTON COUNTY SCHOOL DISTRICT ONE HAS
AN EXCITING OPPORTUNITY FOR INDIVIDUALS WHO
WOULD LIKE TO WORK WITH OUR SCHOOLS IN OUR
SUBSTITUTE PROGRAM.

- Create your own schedule by choosing your work days and locations!
- Family-friendly work hours!
- Stay in touch with our schools and make a difference in a student's life!
- Participation in SC Retirement System!
- And recently increased daily rate of pay!

For additional questions, contact Lydia Ancrum, Substitute Specialist at
(803) 821-1191 or lancrum@lexington1.net

Lexington County School District One
100 Tarrar Springs Road, Lexington, SC 29072

NEED TO REPORT COVID-19 RELATED ITEMS?

**EMAIL NURSE CHRISTA
([CWACKERHAGEN@LEXINGTON1.
NET](mailto:CWACKERHAGEN@LEXINGTON1.NET))**

Do you need to report a COVID-19 related issue? Please email Nurse Christa at cwackerhagen@lexington1.net. During normal school hours you can reach nurse Christa at (803) 821-3324. We ask that all parents report symptoms or positive test results immediately. You may also report information through the [COVID Reporting Form](#). Thank you for your assistance as we navigate these challenging times.

**COVID-19
Reporting
Form**

Please Report Your Child's Absences

CHOOSE JUST ONE OPTION FOR
SUBMITTING YOUR CHILD'S ABSENCE



**UPLOAD YOUR
EXCUSE VIA
EMAIL TO
ALLISON
HARRISON**

[CLICK HERE](#) to email a copy of
your child's excuse to
aharrison@lexington1.net



**SUBMIT A
NOTE
ELECTRONICA
LLY**

[CLICK HERE](#) to submit a parent
note



WRITE A NOTE

Send a **WRITTEN NOTE** to your
child's teacher

NEED ASSISTANCE?



TECHNICAL QUESTIONS

In the event your student needs technical help with their device, please email us at npestechnicalhelp@lexington1.net. This email is checked by our staff throughout the day and someone will gladly respond to assist you. We can also assist with academic questions, as well!



CALL THE OFFICE OR EMAIL US

We are here to help! Call us at (803) 821-3300 or send an email to NPES@lexington1.net.



YOUR ADMINISTRATORS ARE HERE TO ASSIST

Robert Candillo (Principal)
rcandillo@lexington1.net
Lakisha Cook (Assistant Principal)
lhcook@lexington1.net
Becca Matthews (Assistant Principal)
matthews@lexington1.net

CONNECT WITH NPE THROUGH ALL OUR SOCIAL MEDIA CHANNELS...



NEW PROVIDENCE ELEMENTARY

Connect With Us!



On Instagram: NPESLex1



On Twitter:

@ NPESLex1 and tag your tweet:
#NPELions #WeAreNPE



On Facebook: New Providence Elementary



www.npes.lexington1.net



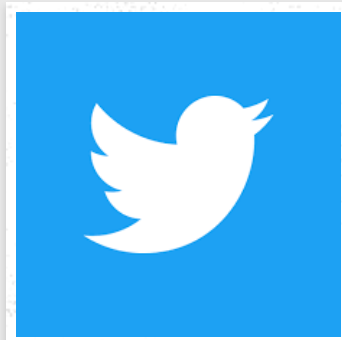
SchoolMessenger

Receive text messages from your school! If you haven't already set up an account or would like to make changes to your account, go to:

- www.lexington1.net
- Select "I am Parent/Guardian"
- Select "School Messenger"



**LIKE NPE ON
FACEBOOK!**



**FOLLOW NPE
ON TWITTER!**



**FOLLOW NPE
ON
INSTAGRAM!**

VISIT OUR WEBSITE



 [New Providence Elementary Sch...](#)

schools.lexington1.net



NEW PROVIDENCE ELEMENTARY SCHOOL

 Facebook  @NPES_Lex1

1118 Old Cherokee Road
Lexington, SC 29072

 1118 Old Cherokee Road, Lexin...

 npes@lexington1.net

 803-821-3300

 npes.lexington1.net/

NEW PROVIDENCE ELEMENTARY SCHOOL IS A COMPUTER SCIENCE IMMERSION SCHOOL

